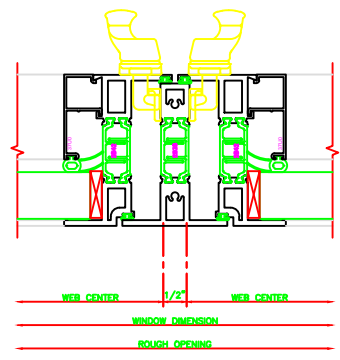
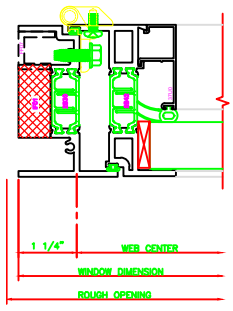


430	JAMB
	325
	CASEMENT IN
	4-BAR ARMS



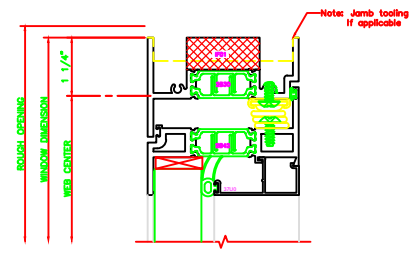
630	MEETING RAIL
	325
	C.I. 1 C.I.
	CAM LOCK

ERECTOR NOTE:
 THE HINGED JAMB FRAME SHALL BE INSTALLED TO UMB. ALL HINGES SHALL BE SECURELY BLOCKED AND ANCHORED TO THE CONDITION THROUGH THE HINGES OR AS CLOSE AS POSSIBLE TO THE HINGES.

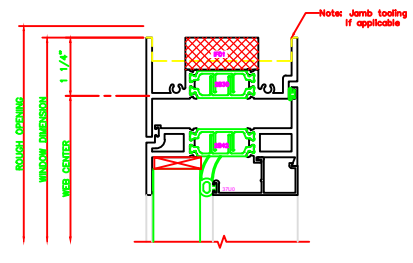


432	JAMB
	325
	CASEMENT IN
	BUTT HINGES

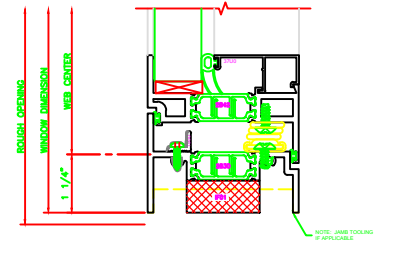
130	HEAD
	325
	CASEMENT IN
	4-BAR ARM



131	HEAD
	325
	CASEMENT IN
	BUTT HINGES



230	SILL
	325
	CASEMENT IN
	4-BAR ARMS



231	SILL
	325
	CASEMENT IN
	BUTT HINGES

